

MAKING A SCENE

Independent Musicians Guide To Music Business

AN EXCLUSIVE INTERVIEW WITH DIANA REIN

BY RICHARD L'HOMMEDIU IN INDIE BLUES ARTIST JUN 10TH, 2016 0 COMMENTS



<http://www.dianarein.com/>

<https://www.facebook.com/dianarein?fref=ts>



An Exclusive Interview with Diana Rein!

by Richard L'Hommedieu [FOLLOW](#)

Mixcloud

00:01



-45:12





In mythology, Sirens were dangerous yet beautiful creatures that would lure sailors with enchanting songs and make them crash onto the rocky coast. It is said that some crews survived by using wax in their ears to keep from being compelled.

But what if the music was turned up? What if it was amplified? What if there were soaring guitar tones that shook your bones and cut through to your soul?

You'd be helpless.

Get ready to meet your fate with Diana Rein on her magnetic Indie Blues sophomore album "Long Road". See if you can escape the artist named "the Six String Siren" by her adoring fans. With a sharp tongue, driving blues guitars and melodic solos — it won't take long before you fall under her spell.

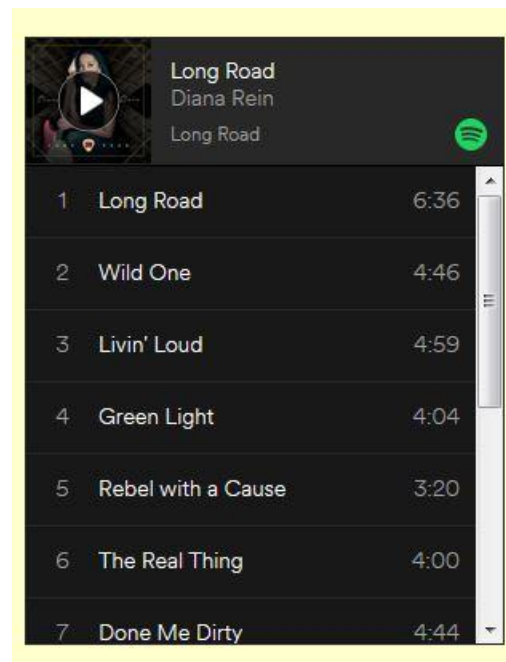
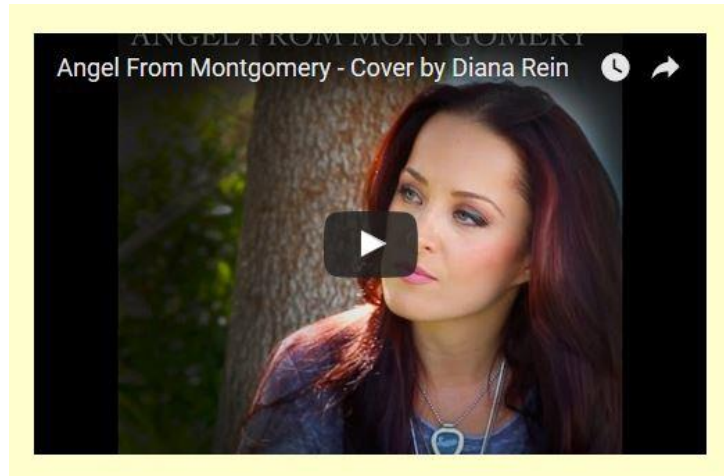
Born in Romania and raised in Chicago, Diana came onto the scene as an acoustic rhythm guitar player in her hometown with the release of her first album of 8 originals "The Back Room".

"Without a doubt, the star on Diana Rein's album, *The Back Room*, is her evocative, lofty voice. Her delivery and range propel the bubbling opener, "You'll Be Mine," and lends grace and subtlety to the title track. – Patrick Conlan of Illinois Entertainer



It wasn't long before she was doing solo and band shows all around Chicago including venues like: The Double Door, Fitzgerald's, Joe's Bar, Lucille's, festivals, college shows and playing a set at The Taste of Chicago right before Bonnie Raitt hit the main stage.

Now, with the advent of Diana finally stepping out as a lead guitarist and vocalist on her new album "Long Road", there are no limits to the music that she will continue creating and sharing with her expectant audiences. Her music is saturated with the Blues at its core and infused with guitar driven Rock and Roots.



<http://www.makingascene.org/exclusive-interview-diana-rein/>